

Discussion

As device dimensions decrease and wafer real estate increases in value, it becomes ever more important to conserve the space dedicated to test structures. Most SIMS test structures have been designed with a minimum size dimension of 100 μm . It has been very difficult to obtain useful data on structures of smaller dimensions. In some cases appropriate test structures do not exist.

SIMS is an extremely valuable tool for determining dopant concentration depth distribution. Depth resolution and detection levels are highly dependent on the instrumental setup, and ratio of measured area to device area. We have acquired SIMS results on areas as small as 25 μm on a side with adequate detection sensitivity.

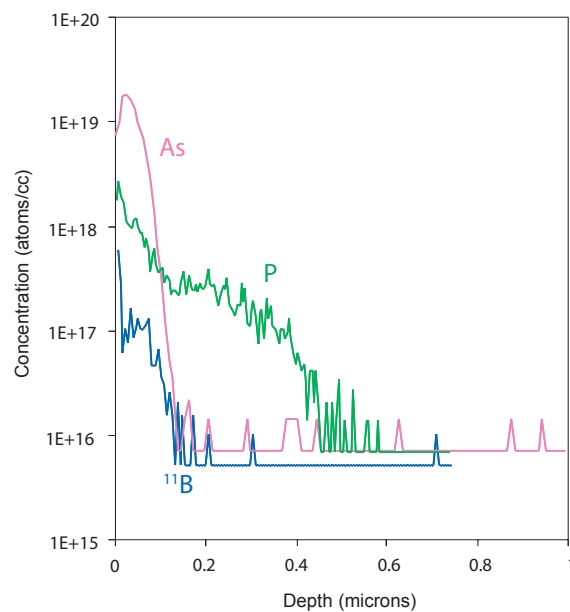
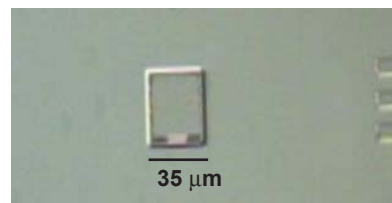


Figure 1. ^{11}B , P, and As profiles taken from a 35 μm x 35 μm area with a detection area 10 μm in diameter

Before



After

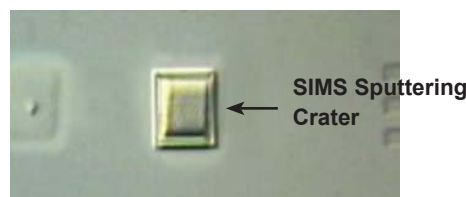


Figure 2. The device region before and after SIMS analysis

United States Locations

Tempe, Arizona
+1 480 239 0602 info.az@eaglabs.com
+1 602 470 2655 fax

Sunnyvale, California
810 Kifer Road
+1 408 530 3500 info.ca@eaglabs.com
+1 408 530 3501 fax

1135 E Arques Avenue
+1 408 738 3033
+1 408 738 3035 fax

785 Lucerne Drive
+1 408 737 3892
+1 408 737 3916 fax

Peabody, Massachusetts
+1 978 278 9500 info.ma@eaglabs.com
+1 978 278 9501 fax

Chanhassen, Minnesota
+1 952 828 6411 info.mn@eaglabs.com
+1 952 828 6449 fax

East Windsor, New Jersey
+1 609 371 4800 info.nj@eaglabs.com
+1 609 371 5666 fax

Syracuse, New York
+1 315 431 9900 info.ny@eaglabs.com
+1 315 431 9800 fax

Raleigh, North Carolina
+1 919 829 7041 info.nc@eaglabs.com
+1 919 829 5518 fax

Round Rock, Texas
+1 512 671 9500 info.tx@eaglabs.com
+1 512 671 9501 fax

International Locations

Shanghai, China
+ 86 21 6879 6088 info.cn@eaglabs.com
+ 86 21 6879 9086 fax

Tournefeuille, France
+ 33 5 61 73 15 29 info.fr@eaglabs.com
+ 33 5 61 73 15 67 fax

Frankfurt, Germany
+ 49 (0) 693053213 info.de@eaglabs.com
+ 49 (0) 69307941 fax

Tokyo, Japan
+ 81 3 5396 0531 info.jp@eaglabs.com
+ 81 3 5396 1930 fax

HsinChu, Taiwan
+ 886 3 5632303 info.tw@eaglabs.com
+ 886 3 5632306 fax

Uxbridge, United Kingdom
+ 44 (0) 1895 811194 info.uk@eaglabs.com
+ 44 (0) 1895 810350 fax