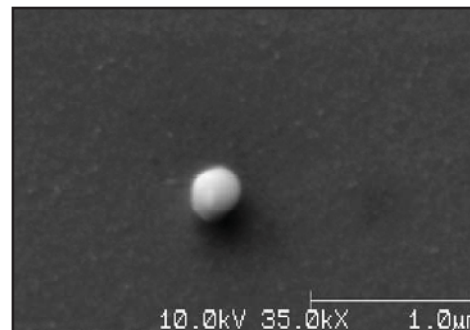
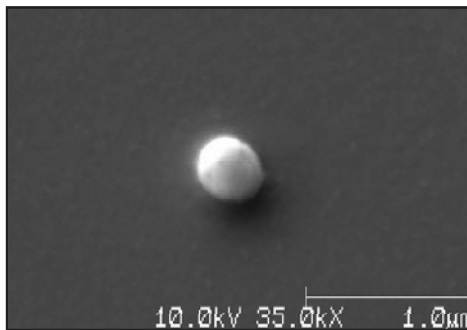


## Discussion

In order to effectively increase yields by eliminating defect sources, it is necessary to correctly identify particulate defects that occur during device processing. This is complicated by reduced design rules and new processes which result in smaller critical defects, and in particulate defects which may look alike but often have different compositions and originate from very different sources. Thus, imaging alone does not uniquely identify the defect type or the defect source. However, measuring the particle composition provides accurate identification, and leads to more reliable determination of the particle source. The inherent spatial resolution limits of EDS make it a less desirable method for analyzing sub-micron defects like these. Auger measurements with the SMART-200 and SMART-Tool are ideally suited for compositional defect identification of small, thin and complex defects on 200mm and 300mm wafers respectively. This information leads to identification of different sources for defects that may look alike, resulting in faster and more comprehensive yield improvement.



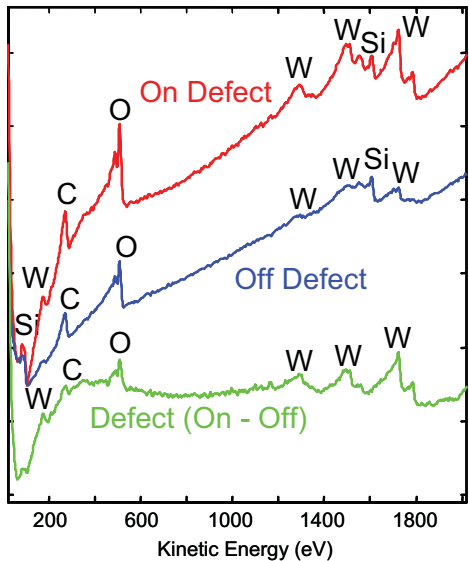
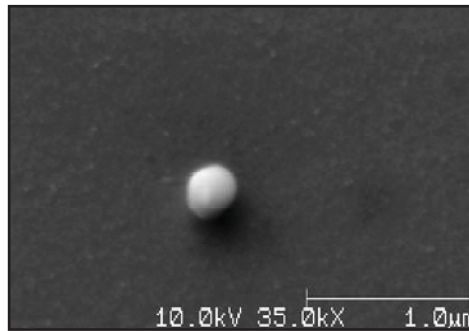
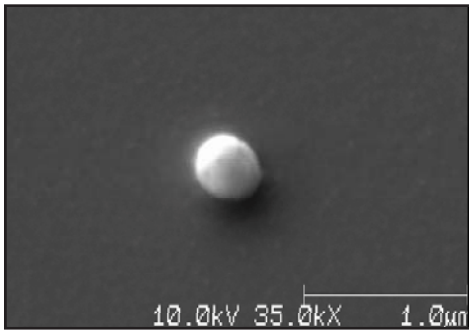
SEM images  
 > Same size  
 > Same Shape  
 > Same Brightness

*SEM images of two defects do not discriminate between defect types, nor suggest their source.*

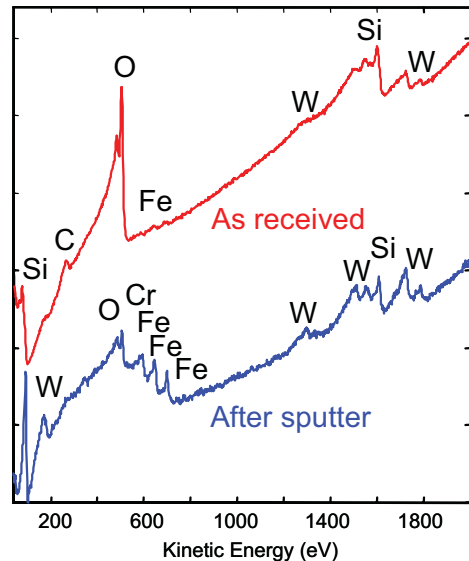
## W Silicide CVD Process

Optical inspection after W silicide CVD ( $WF_6 + SiCl_2H_2$ ) revealed multiple defects. SEM images of two particles on this wafer show that they have the same shape. Defect classification by morphology would indicate that these defects are therefore the same type, and have a single defect source. This classification does not indicate a specific, probable defect source that could be eliminated to increase yield. Energy Dispersive X-ray Spectroscopy (EDS) was also unable to determine the composition or source of these defects since the particle sizes are much smaller than the excitation and analysis volume of EDS.

Auger compositional measurements identified one defect as unreacted W, and the other defect as a stainless steel particle with a thin  $SiO_2$  coating. This information identifies two different defect types with two different defect sources. The unreacted W particle originates from a process chemistry problem. The stainless steel particle originates from the process tool hardware. Additionally, the thin Si oxide coating on the steel particle shows that it has also been through an oxide deposition tool, indicating cross-contamination between process tools.



**Unreacted Tungsten Particle**  
*Process Chemistry*



**Stainless Steel Particle with SiO<sub>2</sub> Coating**  
*Process Tool Hardware*

Auger Measurements  
> Different Composition  
> Different Defect Types  
> Different Defect Sources

*Auger compositional measurements of two defects reveals two different defect types, and indicate probable defect sources.*

SMART-Tool™ and SMART-200™ are registered trademarks of Ulvac-PHI.

**United States Locations**

Tempe, Arizona  
+1 480 239 0602 info.az@eaglabs.com  
+1 602 470 2655 fax

Sunnyvale, California  
810 Kifer Road  
+1 408 530 3500 info.ca@eaglabs.com  
+1 408 530 3501 fax

1135 E Arques Avenue  
+1 408 738 3033  
+1 408 738 3035 fax

785 Lucerne Drive  
+1 408 737 3892  
+1 408 737 3916 fax

Peabody, Massachusetts  
+1 978 278 9500 info.ma@eaglabs.com  
+1 978 278 9501 fax

Chanhassen, Minnesota  
+1 952 828 6411 info.mn@eaglabs.com  
+1 952 828 6449 fax

East Windsor, New Jersey  
+1 609 371 4800 info.nj@eaglabs.com  
+1 609 371 5666 fax

Syracuse, New York  
+1 315 431 9900 info.ny@eaglabs.com  
+1 315 431 9800 fax

Raleigh, North Carolina  
+1 919 829 7041 info.nc@eaglabs.com  
+1 919 829 5518 fax

Round Rock, Texas  
+1 512 671 9500 info.tx@eaglabs.com  
+1 512 671 9501 fax

**International Locations**

Shanghai, China  
+ 86 21 6879 6088 info.cn@eaglabs.com  
+ 86 21 6879 9086 fax

Tournefeuille, France  
+ 33 5 61 73 15 29 info.fr@eaglabs.com  
+ 33 5 61 73 15 67 fax

Frankfurt, Germany  
+ 49 (0) 693053213 info.de@eaglabs.com  
+ 49 (0) 69307941 fax

Tokyo, Japan  
+ 81 3 5396 0531 info.jp@eaglabs.com  
+ 81 3 5396 1930 fax

HsinChu, Taiwan  
+ 886 3 5632303 info.tw@eaglabs.com  
+ 886 3 5632306 fax

Uxbridge, United Kingdom  
+ 44 (0) 1895 811194 info.uk@eaglabs.com  
+ 44 (0) 1895 810350 fax